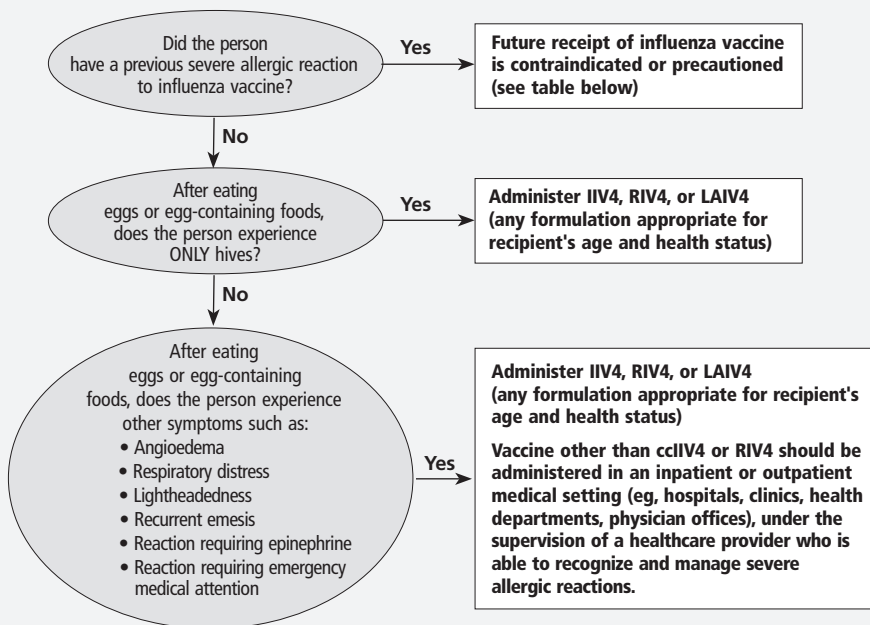


INFLUENZA VACCINE RECOMMENDATIONS: ALLERGIES

All vaccination providers should be familiar with the office emergency plan and have current certification in cardiopulmonary resuscitation. Epinephrine and emergency equipment for airway maintenance must be readily available for immediate use.



VACCINE CONTRAINDICATIONS AND PRECAUTIONS

Vaccine [†] associated with previous severe allergic reaction	Influenza Vaccines (2021-22 season)		
	Egg-based IIV4s and LAIV4	cclIV4	RIV4
Any egg-based IIV or LAIV	Contraindication	Precaution*	Precaution*
Any cclIV	Contraindication	Contraindication	Precaution*
Any RIV	Contraindication	Precaution*	Contraindication
Unknown influenza vaccine	Consult with allergist		

NOTES

Key: cclIV4 = Cell Culture-based Inactivated Influenza Vaccine, Quadrivalent; IIV4 = Inactivated Influenza Vaccine, Quadrivalent; LAIV4 = Live Attenuated Influenza Vaccine, Quadrivalent; RIV4 = Recombinant Influenza Vaccine, Quadrivalent

* Vaccination should generally be deferred but might be indicated if the benefit of protection from the vaccine outweighs the risk for an adverse reaction. Providers can consider vaccination but should occur in an inpatient or outpatient medical setting under the supervision of a health care provider who is able to recognize and manage severe allergic reactions. Providers can also consider consulting with an allergist to help determine which vaccine component is responsible for the allergic reaction.

[†] Vaccine of any valency (eg, trivalent, quadrivalent)

REFERENCES

Grohskopf LA, Alyanak E, Ferdinands JM, et al. Prevention and Control of Seasonal Influenza with Vaccines: Recommendations of the Advisory Committee on Immunization Practices, United States, 2021–22 Influenza Season. *MMWR Recomm Rep*. 2021;70(No. RR-5):1–28. DOI: <http://dx.doi.org/10.15585/mmwr.rr7005a1>. (Rev. 9/2021)